



DEEP DETAILS
— TRADING EST —



TEMPORARY & PARMANENT
FACADE ACCESS EQUIPMENTS

Deep Details company was established at the year 2018 to optimize the investment of the company's resources in the field of supplying and installing FACADE ACCESS SOLUTIONS , temporary and permanent, because of our experience from previous work and the expertise of professional working hands of technicians and engineers while providing the best International products at the best prices and always aiming to satisfy our customers before and after sales

The company has gained extensive experience and high-level technical skills that allowed it to provide its customers with exceptional professional services, as the company turned from being just a provider of access solutions & services to an integrated company for BMU technology solutions and complete knowledge of the requirements, specifications and quality level in our field. BMU SYSTEM is a mission we take on so it is not only a job but a lifelong passion

DEEP DETAILS has a major impact regarding the company's core products. Designing and building modern equipment that allows difficult activities to be executed more easily, takes us to one of our core values: Innovation. Safety is another value that underpins all deep details products, where the comfort of the users and their correct use of the equipment is essential

The need for innovative systems, led to the pursuit of new technologies that could allow a worker to be faster and safer, while being more productive at the same time. Looking ahead, we will continue our path of innovation, offering consistently innovative products to our customers. Our efforts will keep focused on the client needs, safety and comfort





QUALITY

Quality of our products and services is the most fundamental output of all our operations. Reliable products and support services is the ground that feeds the growth of our activities.

With top European Quality and careful production, our products pass a strict production control, and third-party audits. DEEP DETAILS is currently under the process of ISO:9001 certification.

Environment

Environment has become crucial to the sustainability of our planet and future Generations. The climate crisis we are facing in the XXI Century, require that all businesses and leaders around the world, grow an Environmental culture that educates all societies around the world.

we are constantly adjusting our actions and products to minimize the environmental impact of our operations and leaving a greener ecological footprint.

Sustainability

The Certification of all our Products is the end-result of our activities. All our portfolio follow the strictest European and American Standards

Following European Standards and Directives, all our products are CE Certified and Marked, with all documentation and certificates. This states that the products are properly tested and accredited before being placed on the market and meets all the EU safety, health and Environmental Protection.

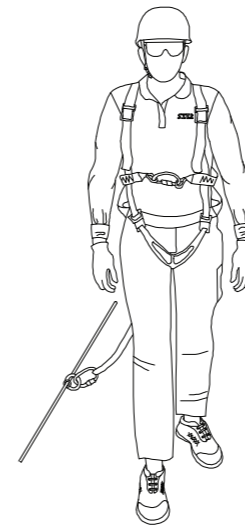
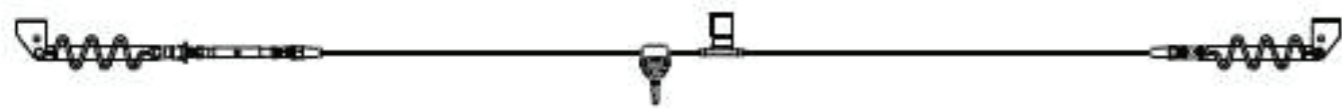
We also follow the American Standards such as ANSI, ASME and OSHA during during our product development, usage, installation and operation



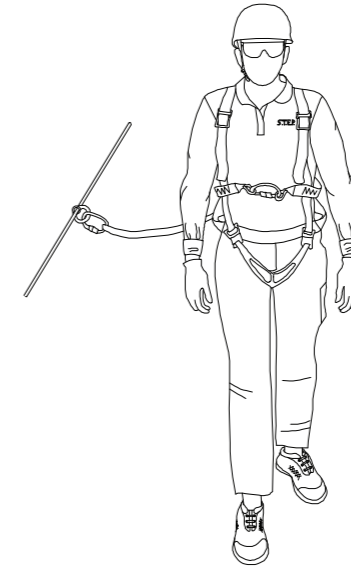
LIFE LINE

The Horizontal Lifeline Systems designed and certified .Are all constructed of 316 Stainless Steel and are used in many of the fall arrest and fall restraint systems

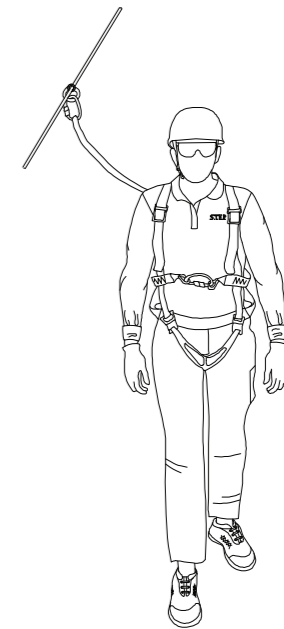
Anchor Device Type c | Typical applications are unprotected walkways while the Roof version is usually applied on industrial buildings, this system is installed at floor level with brackets fixed to the roof or ground.



ROOF / FLOOR
Installed at floor level with brackets fixed to the roof or ground

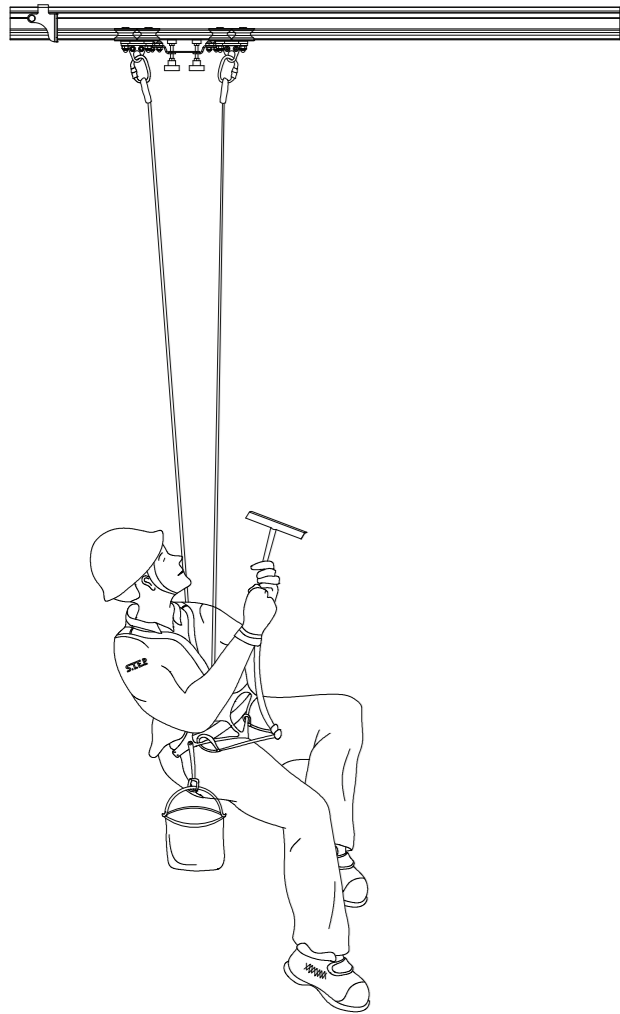


WALL
Usually installed in balconies, roofs, or skylights, makes traversing simpler and easier.



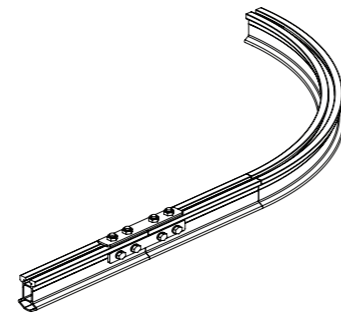
OVERHEAD
Typical applications are unprotected walkways, industrial areas, and others

LIFE RAIL



The Horizontal LIFERAIL Systems designed and manufactured. The Liferail consist of a permanent aluminium track fixed outside of the building, supported by steel bracket anchored to the concrete wall and used as track for a stainless steel trolley manually operated by the worker. The rail is made of aluminum that can be straight or curved depending on the architectural design of the building

Max. Load: 120kg per Trolley Trolley weight: 1.2 kg
Lock-in-position pin
Material: Aluminium



Anchor Device
Type c
EN795:2012
TS 16415:2013

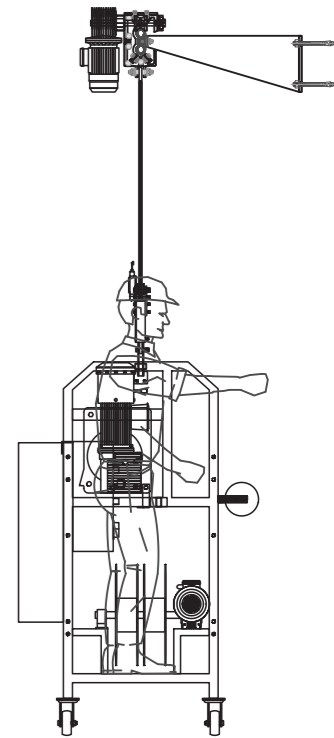
LIFERAIL allows a smooth and safe access to your façade, rooftop, walkways or areas with risk of falls from heights.



MONORAIL SYSTEM

The Aluminum monorail profile is designed for easy mounting on every type of building or structure where a horizontal monorail solution is required. Because of the specially designed shape of the monorail extrusion, able to produce monorail sections that are light weight but very strong. A wide range of bracket types insures a smooth monorail path at all times. Even unique architecture is no problem for the monorail system.

In combination with single or double suspension trolleys and our BMU cradles, the monorail system will provide you a safe, permanent and cost effective solution for all your access or maintenance problems.



Suspended Access
EN1808
2006/42/EC

This system is designed specifically to access entire external façade of the structure/building for maintenance/cleaning.



DAVIT SYSTEM

Davits are usually one of the cheapest alternatives for facade access. This means it is usually suitable for the simple buildings. The davit system is invisible from the ground level as it is movable and thus can be stored away when not in use. The davits usually have wheels to make them easy to move. Erecting and lowering the davit is also made as simple as possible for quick and efficient access.



Suspended Access
EN1808
2006/42/EC

Davit systems are easy to operate, economical and readily customized System is preferred, when necessary, for the working platform to park on the terrace floor / level.



BMU - ROOF MOUNTED MACHINE

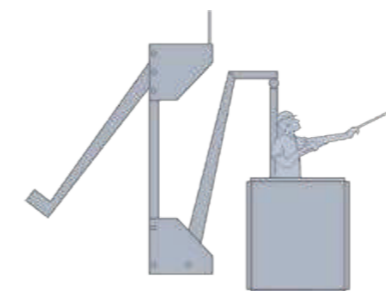
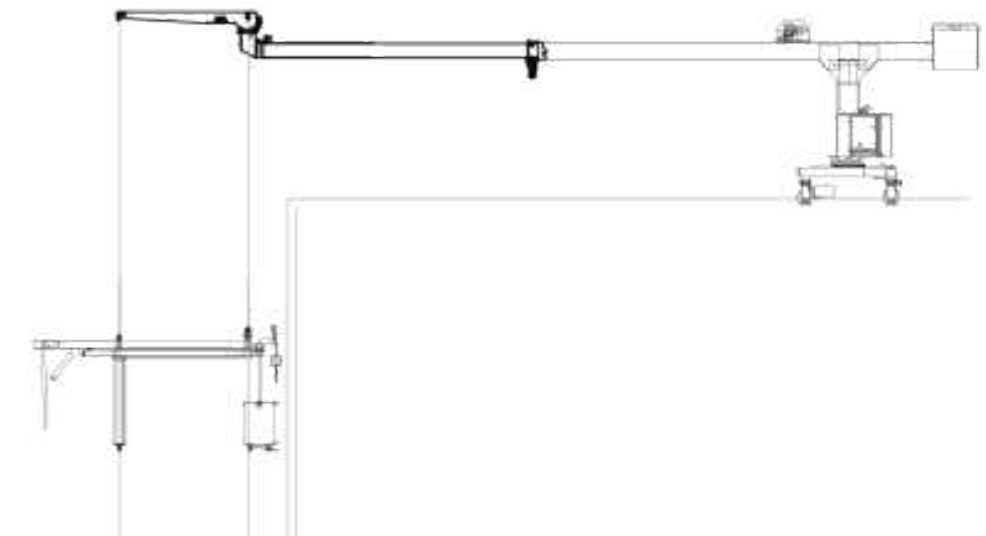
A BMU is a crane type access equipment, usually suspended from the roof, which moves systematically over some surface of a structure while positioning the cradle in front of the façade to maintain or clean the covered surfaces.

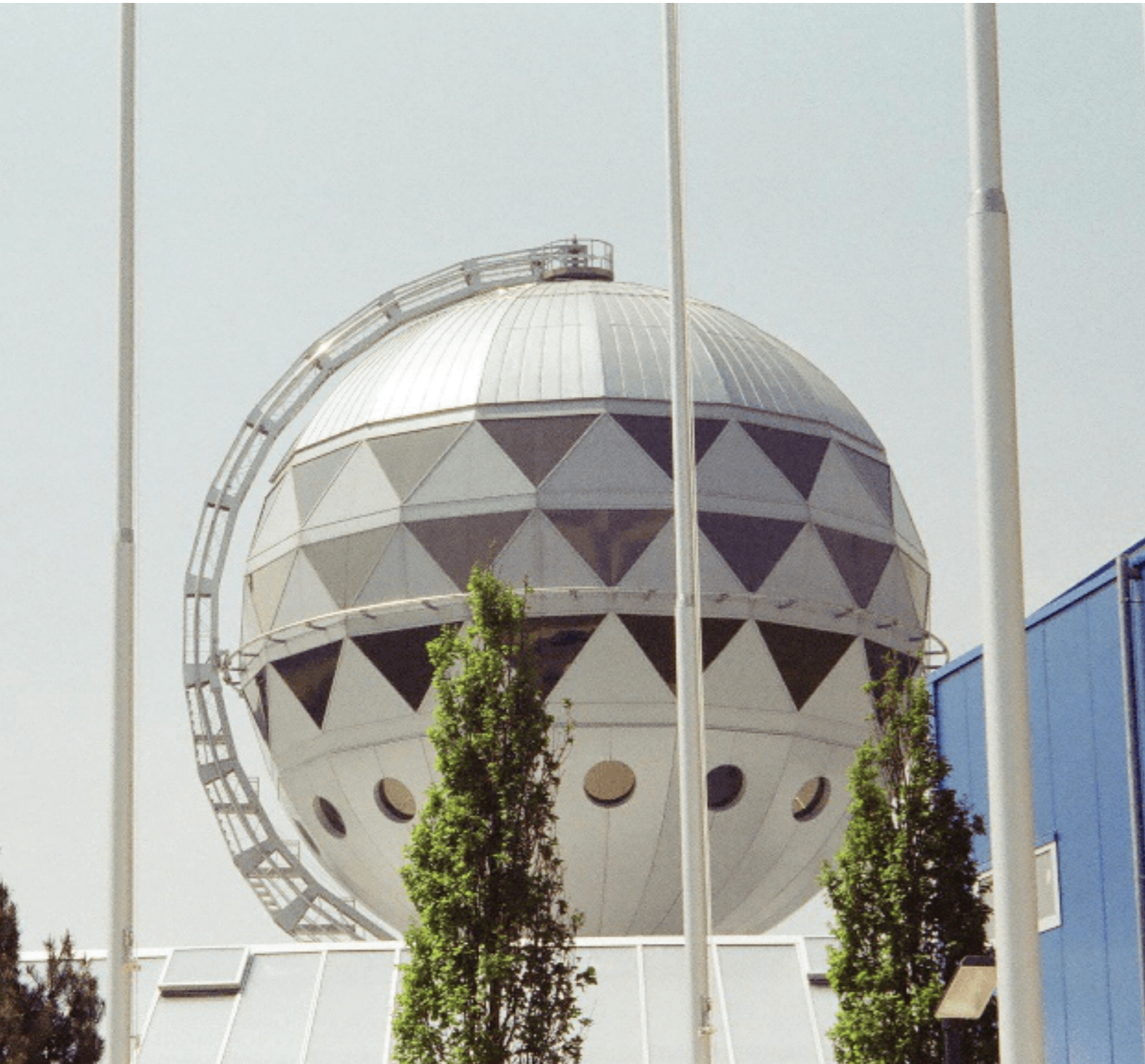
Building Maintenance Units are used in more complicated building designs, and provide a sophisticated façade access solution.

The design of the machine, its specifications, positioning on the structure are customised based on the requirements of the project.

Suspended Access
EN1808
2006/42/EC

BMU usually mounted permanently at roof level, are the safest and most complete form of suspended access system, providing full lateral, horizontal and vertical movement of the working platform, in order to access all external facades of a building.





GANTRY SYSTEM

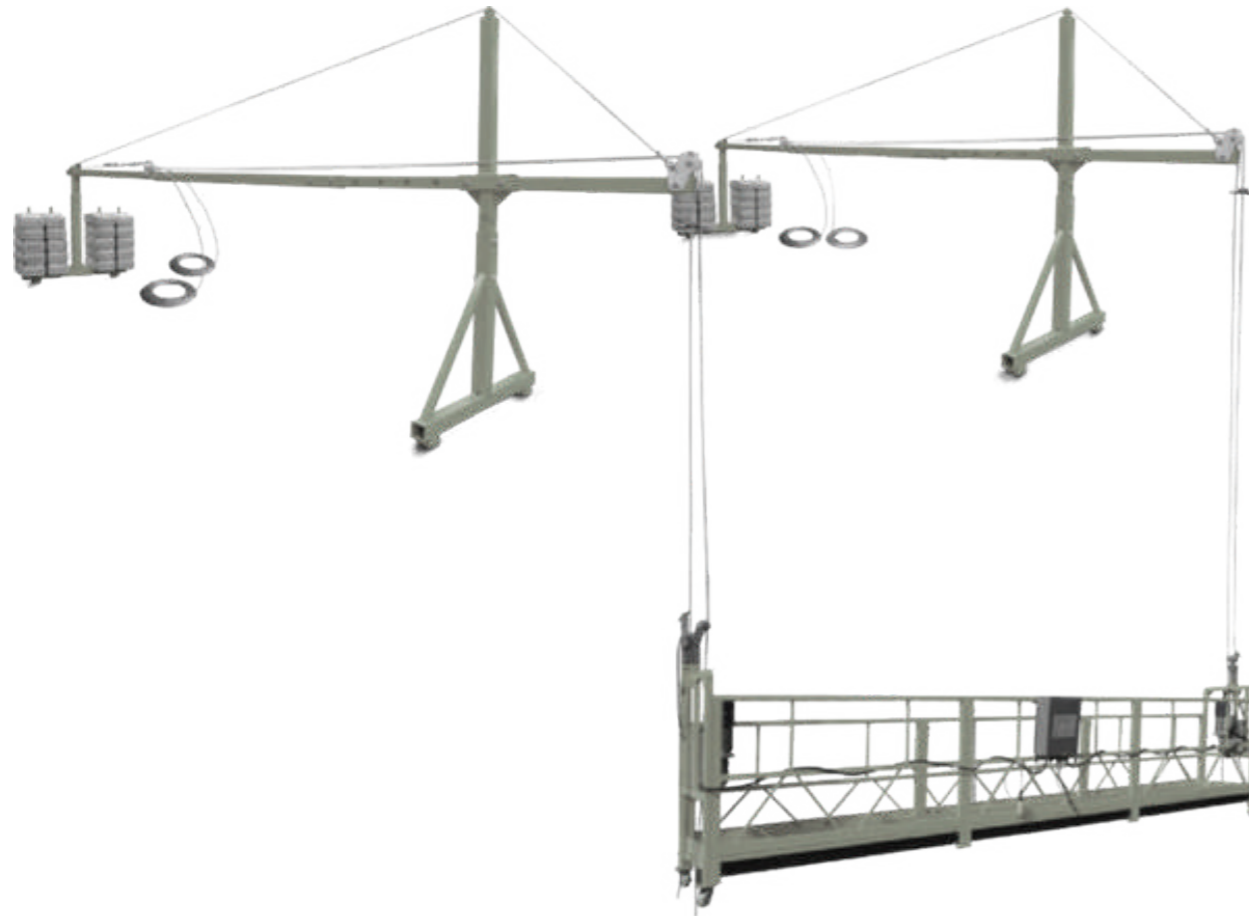
GANTRIES are Taylor-made according to the project requirements and designed for one or more workers. The width and length is determined by the specifics of each Project. As well as the incorporation of manual or motorized traversing systems. Types of finishes includes galvanized steel or aluminum and other many other components as required. Giving solutions to any type of skylight.



Suspended Access
EN1808
2006/42/EC

The gantries will normally have a high mounted handrail and closed ends which ensure that the users will not fall out of the gantry





TEMPORARY SUSPENDED PLATFORM

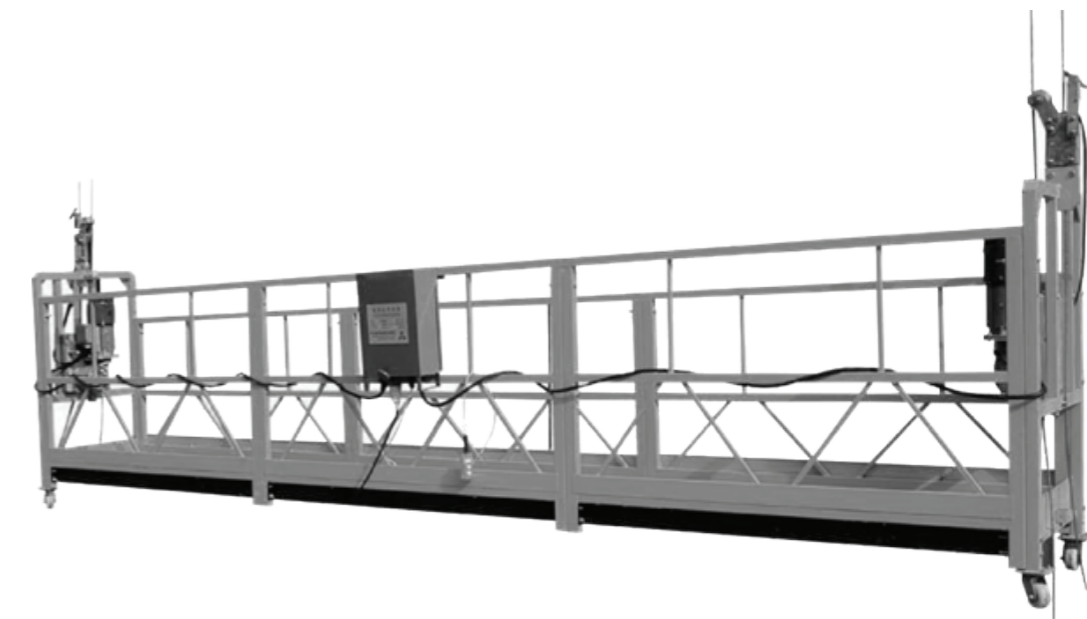
It takes men and materials up to the ideal working height to get the job done (Painting, welding, chimneys maintenance, bridge construction etc.) correctly and efficiently done.

It consists of :

- Time saving and cost saving alternative to tubular scaffolding
- Unlimited working height
- Quick and easy to assemble and install Light weight and easy to transport
- Aluminum (Steel) platform
- Motorized traction hoists and controls
- Steel wire ropes attached to a roof suspension system

Type	ZLP1000	ZLP800	ZLP630	ZLP500	ZLP250
Rated Load	1000 kg	800 kg	630 kg	500 kg	250 kg
Lifting Speed	8.7m/min	9.0m/min	9.0m/min	9.0m/min	9.0m/min
Voltage-3phase	380V(415V/220V)	380V(415V/220V)	380V(415V/220V)	380V(415V/220V)	380V(415V/220V)
Frequency	50Hz/60Hz	50Hz/60Hz	50Hz/60Hz	50Hz/60Hz	50Hz/60Hz
Rated Power	2.0×2	1.8×2	1.5×2	1.1×2	1.1×1
Hoist Model	LTD100	LTD80	LTD63	LTD50	LTD50
Safety Lock Model	LSF310	LSF309	LSF308	LSF308	OSL308
Dia. of Wire Rope	4×31SW+FC-10.2mm	4×31SW+FC-9.1mm	4×31SW+FC-8.3mm	4×31SW+FC-8.3mm	4×31SW+FC-8.3mm
Platform Size (L×W×H)	(2.5×3)×0.76×1.45M	(2.5×3)×0.76×1.45M	(2×3)×0.76×1.45M	(2.5×2)×0.76×1.45M	1.2×0.65×2.3M
Weight of Suspension Jibs	340kg	340kg	340kg	340kg	170kg
Weight Of Lifting Part	520kg(Steel)	520kg(Steel)	450kg(Steel)	410kg(Steel)	200kg(Steel)
	340kg(Aluminum)	340kg(Aluminum)	310kg(Aluminum)	290kg(Aluminum)	140kg(Aluminum)
Counter Weight	1200kg	1000kg	900kg	800kg	350kg

The weight of lifting part includes platform, hoist, safety locks and electric control system

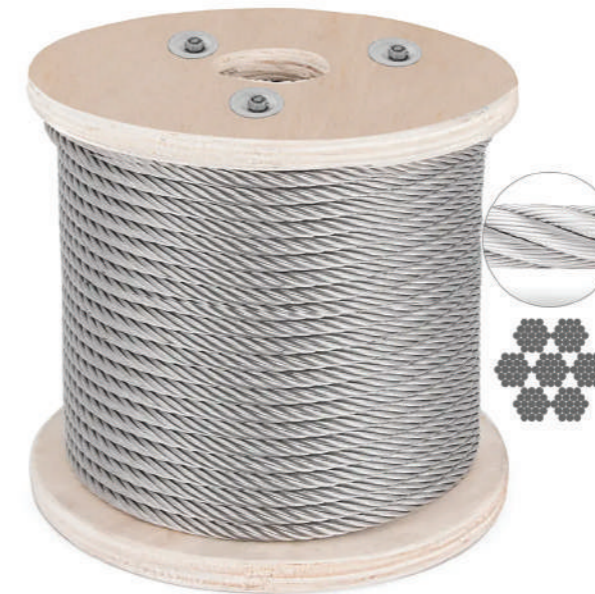


WIRE ROPE AND ASSESORIES

Electric hoist swivel frame



Truck crane



Outdoor mini crane



7x19 Stainless Steel Wire Rope Specification:

Structure	Rope diameter mm	kg/1000m	Minimum Breaking force N	Minimum Breaking force kg
7x19	2.5	25	4410	450
	3	36	6370	650
	3.2	40.96	7850	801
	4	64	8620	880
	4.5	81	12250	1250
	4.8	92.16	16510	1685
	5	100	16660	1700
	5.6	125.44	22250	2270
	6	144	23520	2400
	6.4	163.84	28500	2908
	8	256	40000	4082
	9	324	46000	4694
	9.5	361	53400	5449
	10	400	54000	5510
	12	576	73000	7449
	13	676	82000	8367
	14	784	89000	9082
	16	1024	124000	12653
	18	1296	157000	16020
	20	1600	194000	19796
22	1936	235000	23980	
24	2304	280000	28571	
26	2704	328000	33469	
28	3136	381000	38878	
30	3600	437000	44592	
32	4096	497000	50714	

other diameter and construction available

Manual stacker

The main features



1. Manual stacker is made of high quality alloy steel, strong bearing capacity, beautiful appearance, strong and durable
2. Manual stacker has the advantages of smooth lifting, compact structure, flexible transportation and simple operation.
3. products are suitable for factory, workshop, warehouse, station dock and other cargo lifting, lifting and moving operations

Model	CTY1000-1.6	CTY2000-1.6	CTY3000-1.6
Max Rated load	1000kg	2000kg	3000kg
Max lifting height	1.6 meters	1.6 meters	1.6 meters
Lowest height	70mm	90mm	70mm
Fork length	840mm	860mm	1050mm
Fork width	560mm	700mm	800mm
Wheel material	Nylon	Nylon	Nylon
Real Wheel size	180×50mm	180×50mm	180×50mm
Overall size	1250×730×2040mm	1300×730×2040mm	1550×805×2070mm
Qty a 20ft	30 units	30 units	30 units
Weight	130kg	170kg	220kg

Wire rope pulling winch



Model	JM-800	JM-1600	JM-3200	JM-5400
Lashing Capacity	800	1600	3200	5400
Rated forward handpower	341	400	438	850
Rated forward travel	=>52	=>55	=>28	=>25
Rope diamete	8.3	11	16	20
Safety factor	5	5	5	5
Max traveling load	1200	2400	4000	8100
Weight	6.4	12	23	58

Hand winch



Model	Lashing Capacity	Rope length	Rope diameter	Ratio	Pulling	lifting	Weight
1200lb	1200lb	5-30m	4mm	4:1	500kg	150kg	6.5kg
1800lb	1800lb	5-30m	5mm	4:1	800kg	300kg	7kg
2600lb	2600lb	5-30m	5mm	153:1	1100kg	550kg	9kg

PA

Pa type miniature electric hoist with trolley



The main features

PA

Pa type miniature electric hoist



The main features

The miniature electric hoist is a new electric lifting tool with single-phase electric low voltage. It gets rid of the restraint of three-phase electricity and has a wider range of applications.

Remote control: with emergency stop button, safe and secure, can be equipped with wireless remote control

Wire rope: The wire rope adopts GB-1102-71 (19*7) type lifting wire rope, which is durable

Motor protection rating: IP40

Brake: point magnetic brake system, automatic brake after power off

The miniature electric hoist is a new electric lifting tool with single-phase electric low voltage. It gets rid of the restraint of three-phase electricity and has a wider range of applications.

Remote control: with emergency stop button, safe and secure, can be equipped with wireless remote control

Wire rope: The wire rope adopts GB-1102-71 (19*7) type lifting wire rope, which is durable

Motor protection rating: IP40

Brake: point magnetic brake system, automatic brake after power off

Model	Capacity (kg)	Lifting height(m)	Lifting speed(m/min)	Voltage(v)	Power(Kw)	Packing Size(cm)	PCS/Case	N.W.(kg)
PA200	100/200	12/6m	10/5m/min	220	0.51	38*29*23	2	22
PA250	125/250	12/6m	10/5m/min	220	0.55	38*29*23	2	22
PA300	150/300	12/6m	10/5m/min	200	0.6	38*29*23	2	23
PA400	200/400	12/6m	10/5m/min	220	0.98	44*33*26	2	30
PA500	250/500	12/6	10/5m/min	200	1.02	44*33*26	2	31
PA600	300/600	12/6m	10/5m/min	220	1.2	44*33*26	2	32
PA800	400/800	12/6m	10/5m/min	220	1.3	44*33*26	2	33
PA1000	500/1000	12/6m	8/4m/min	220	1.6	55*25*32	1	27
PA1200	600/1200	12/6m	8/4m/min	220	1.8	55*25*32	1	29

Model	Capacity (kg)	Lifting height(m)	Lifting speed(m/min)	Voltage(v)	Power(Kw)	Packing Size(cm)	PCS/Case	N.W.(kg)
PA200	100/200	12/6m	10/5m/min	220	0.51	38*29*23	2	22
PA250	125/250	12/6m	10/5m/min	220	0.55	38*29*23	2	22
PA300	150/300	12/6m	10/5m/min	200	0.6	38*29*23	2	23
PA400	200/400	12/6m	10/5m/min	220	0.98	44*33*26	2	30
PA500	250/500	12/6	10/5m/min	200	1.02	44*33*26	2	31
PA600	300/600	12/6m	10/5m/min	220	1.2	44*33*26	2	32
PA800	400/800	12/6m	10/5m/min	220	1.3	44*33*26	2	33
PA1000	500/1000	12/6m	8/4m/min	220	1.6	55*25*32	1	27
PA1200	600/1200	12/6m	8/4m/min	220	1.8	55*25*32	1	29

CD1

CD1 wire rope electric hoist



The main features

CD1 wire rope electric hoist is a light and small lifting equipment with compact structure, light weight, small size, universal parts and easy operation.

Reducer: The reducer adopts hard tooth surface transmission design, long life and high mechanical efficiency.

Motor: The motor uses a conical rotor brake motor. The motor load duration is 25%.

Motor protection: degree of protection: IP54

Insulation class: Class B

Limit: There are upper and lower two-way safety limit devices.

Push button switch: 36V safety voltage switch, according to customer needs, the hoist can be equipped with a wireless remote control.

	0.5T	1T	2T	3T	5T	10T
Capacity (T)	0.5	1	2	3	5	10
Lifting Height	6m	6M	6M	6M	9M	9M
Lifting speed	8m/min					
trolley speed	20m/min					
cable	6×37-4.8	6×37-7.4	6×37-11	6×37-13	6×37-15	6×37-15
I-steel type	16-28b	16-28b	20a-32c	20a-32c	25a-63c	28a-63c
Minimum radius of ring	1.5	1.5-4	2-4	2-4	2.5-5	3.5-9
(Voltage) v	380/220/440	380/220/440	380/220/440	380/220/440	380/220/440	380/220/440
	3	3	3	3	3	3

KCD

KCD Multifunctional Electric Winch



The main features



Multifunctional hoist

Multifunctional Electric Winch

Powered by conical motors and ordinary motors

Combined with the shifting structure to lift the reel

Winch can be hung or used on the ground

The machine can be widely used in small and medium-sized houses, high-rise building decoration, hanging floor slabs, drilling wells, warehouse cranes and other units.



	Capacity	Lifting Speed	Motor	Motor	Voltage	Lifting	
Model	(Kg)	(m/min)	Power (Kw)	R.P.M	(V)	height (m)	N.W. (kg)
KCD-300/600	300/600	14/7	0.6	1380	380	30-60	32
KCD-400/800	400/800	14/7	2.2	1380	220	30-60	34
KCD-500/1000	500/1000	14/7	1.5	1380	380	30-100	50
KCD-750/1500	750/1500	14/7	1.5	1380	380	30-100	65
KCD-1000/2000	1000/2000	16/8	3	1380	380	30-100	150



HHBB

HHBB Type electric chain hoist

The main features

1. Enclosure: The casing is light and sturdy. High heat dissipation. The fully sealed design is suitable for use in environments with poor working conditions.
2. Reverse phase protection device: It is a special electrical device. When the power supply wiring is wrong, the control circuit cannot work.
3. Limit switch: There is a limit switch device for lifting and lifting the heavy object, so that the motor stops automatically to prevent the chain from exceeding and ensuring safety.
4. Low-voltage handle switch: The handle low-voltage control 24V/36V/48V device can prevent accidents when the switch leaks during operation.
5. Brake device: The brake is braked by disc DC electromagnetic field, the braking torque is large, stable, rapid and low noise.
6. Chain: 80 grade super heat-treated alloy steel chain makes the chain more tough and more durable. It ensures safety during work.
7. The operation of the device: an electric car with a guide means so that both run more smoothly on the hoist beam.

HHBB	(T) WLL	(M) Height	(M/Min) Speed	Lifting motor					Trolley motor					(mm) I-beam	
				(Kw)	(R/min)	P	(V)	(Hz)	(Kw)	(R/min)	(M/Min)	P	(V)		(Hz)
0.5-1	0.5	3/9	7.2	0.75	1440	3	380	50	0.4	1140	11	3	380	50	68-130
01-01	1	3/9	6.8	1.5	1440	3	380	50	0.4	1440	11	3	380	50	68-130
01-02	1	3/9	3.9	1.1	1440	3	380	50	0.4	1440	11	3	380	50	68-130
02-01	2	3/9	6.8	3	1440	3	380	50	0.4	1440	11	3	380	50	82-153
02-02	2	3/9	3.4	1.5	1440	3	380	50	0.4	1440	11	3	380	50	82-153
03-01	3	3/9	5.6	3.0	1440	3	380	50	0.75	1440	11	3	380	50	82-153
03-02	3	3/9	5.8	3.0	1440	3	380	50	0.75	1440	11	3	380	50	82-153
05-02	5	3/9	2.8	3.0	1440	3	380	50	0.75	1440	11	3	380	50	100-178

KDJ

KDJ electric winch



The main features

High versatility, compact structure, small size, light weight, great importance, easy to use and transfer. It is widely used in construction, water conservancy projects, forestry, mining, docks, etc. It can be used as an auxiliary equipment for modern electronically controlled automatic operation lines. Suitable for civil construction and installation of construction and installation companies, mining areas, factories.

	1T	2T	3T	5T	10T
(Capacity) T	1	2	3	5	10
(Lifting Speed)m/min	8M/16M				
Cable	6×37-7.4	6×37-11	6×37-13	6×37-15	6×37-15
(Voltage)v	380/220/440	380/220/440	380/220/440	380/220/440	380/220/440
(frequency)Hz	50	50	50	50	50
(Phase)	3	3	3	3	3



Aerial Work Platforms, Scissors lift, Electric Boom Lifts, Articulating & Telescopic Boom Lifts, Trailer Mounted boom Lifts, and Crawler lift (Articulated & Telescopic lifts).

AERIAL WORKING PLATFORM

Working safely at heights is only possible when your machines are safe. As a supplier of solutions in aerial work platforms, WE offers a maintenance service. offers two types of maintenance: a basic contract and an extended contract. It is possible to contract for a longer period, up to five years. If desired this could include maintenance, repair, spare parts, call out, a number of malfunctions per year and a replacing machine. The price of your contract depends on the age and type of your machine. Excluded from a maintenance agreement are batteries, chargers, tires and relays.





TOWER CRANES

We are specialized in Supply & Installation of Tower Cranes in all over Saudi Arabia, our Cranes have been Widely Installed in many project whose payload capacity is as much as Required , and the erection height ,



DEPCO tower Cranes Hire & Sales, we offer you rack and pinion Tower Cranes with Best Maintenance services.. looking for a specific Crane type or want advice from an experienced crane specialist. Contact us.



CONSTRUCTION HOIST

We are specialized in Supply & Installation of Construction Hoist in all over Saudi Arabia, our building hoist have been Widely Installed in many project and won good reputation, whose payload capacity is as much as 10000kg, lifting speed can reach up to 96m/min, and the erection height reaches up to 550m., our products have been widely used for transportation for both men and cargo in field of general buildings, but also industry, electric power, mining well, oil, chemical industry etc.



DEPCO Construction Hoist Hire & Sales, we offer you rack and pinion constructionhoists with best hoist services.. looking for a specific hoist type or want advicefrom an experienced hoist specialist. Contact us.

RENTAL EQUIPMENTS

DEPCO Provides a comprehensive range of equipment on a rental basis as per the requirement of our clients. We have committed and dedicated professional staff to ensure outstanding services.



Rental activities are part of Redstone core business. We support numerous local projects that require rental equipment. Also at large construction sites